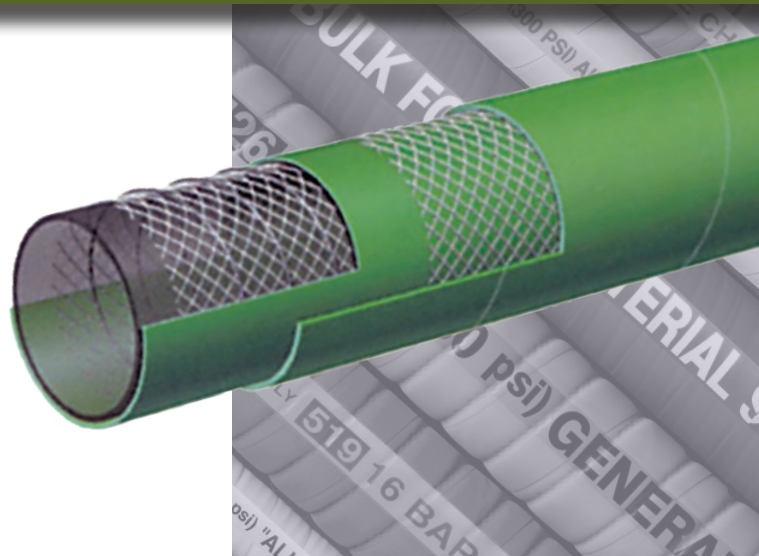


Chemical



T5050G Acid – Chemical S & D 240 PSI – XLPE



Warning
Before using chemical hoses consult chemical resistance chart or consult factory.

Applications:

Suction and transfer service for a variety of chemicals and solvents. Will handle 90% of existing chemicals. See Chemical Resistance Chart on pages 66 – 75.

Cover:

Green EPDM – abrasion and ozone resistant.

Reinforcement:

High tensile textile cords with flexible steel helix wire.

Tube:

Transparent XLPE (cross-linked polyethylene).

Working Pressure:

Constant Pressure – 16 Bar (240 PSI)

Temperature Range:

Normal recommended operating temperature is -22°F (-30°C) to 176°F (+80°C)

Branding:

ALFAGOMMA – ITALY T505 16 BAR (240 PSI) – XLPE
CHEMICAL – S & D (in orange letters)

Standard Length:

100 feet

IT IS ADVISABLE TO TEST THE TUBE MATERIAL UNDER ACTUAL SERVICE CONDITIONS PRIOR TO USE.
NOTE: FOR MAXIMUM SERVICE LIFE, WE RECOMMEND THAT T505 HOSE BE FLUSHED OUT AFTER EVERY USE.

Nominal Specifications

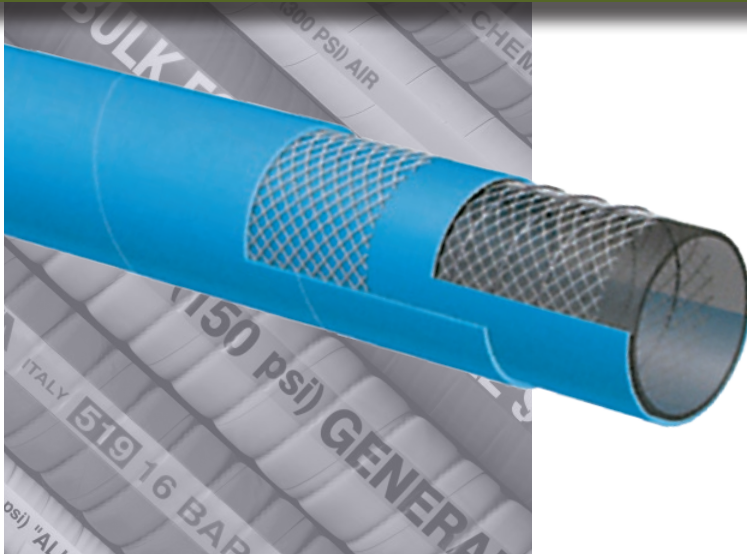
Series	ID (in.)	ID (mm)	OD (in.)	OD (mm)	Max Rec. WP (PSI)	Vacuum HG (in.)	Min. Bending Radius (in. @ 68°F)	Weight (lbs./ft.)
T5050G075	3/4	19	1.22	31	240	27	7 1/2	0.46
T5050G100	1	25	1.46	37	240	27	9	0.56
T5050G150	1 1/2	38	1.97	50	240	27	13 1/4	0.76
T5050G200	2	51	2.48	63	240	27	16 1/4	1.00
T5050G300	3	76	3.62	92	240	24	20 3/4	1.83
T5050G400	4	102	4.65	118	240	24	26 1/2	2.50

COUPLING SUGGESTIONS

Quick-Acting and combination nipples, preferably stainless steel, attached with bands.

★ Kuriyama offers a full line of Quick-Acting couplings, pin lug shank couplings and combination nipples. Refer to current Kuriyama-Couplings™ and Accessories Catalog for type and pricing.

BECAUSE WE CONTINUALLY EXAMINE WAYS TO IMPROVE OUR PRODUCTS, WE RESERVE THE RIGHT TO ALTER SPECIFICATIONS OR DISCONTINUE PRODUCTS WITHOUT PRIOR NOTICE.



T5090E

Acid – Chemical S & D
240 PSI – UHMWPE
Meets FDA Requirements
Suitable for use with DEF

Warning
 Before using chemical hoses consult chemical resistance chart or consult factory.

Applications:

Suction and transfer service for a variety of chemicals and acids. Will handle 98% of EXISTING CHEMICALS. See Chemical Resistance Chart on pages 66 – 75.

Cover:

Blue EPDM – abrasion and ozone resistant.

Reinforcement:

Synthetic textile cords with flexible steel helix wire.

Tube:

Transparent UHMWPE (Ultra High Molecular Weight Polyethylene).

Working Pressure:

Constant Pressure – 16 Bar (240 PSI)

Temperature Range:

Normal recommended operating temperature is -22°F (-30°C) to 200°F (+93°C)

Branding:

ALFAGOMMA – ITALY T509 16 BAR (240 PSI) – UHMWPE CHEMICAL – S & D (in orange letters)

Standard Length:

100 feet

IT IS ADVISABLE TO TEST THE TUBE MATERIAL UNDER ACTUAL SERVICE CONDITIONS PRIOR TO USE.
 NOTE: FOR MAXIMUM SERVICE LIFE, WE RECOMMEND THAT T509 HOSE BE FLUSHED OUT AFTER EVERY USE.

Nominal Specifications								
Series	ID (in.)	ID (mm)	OD (in.)	OD (mm)	Max Rec. WP (PSI)	Vacuum HG (in.)	Min. Bending Radius (in. @ 68°F)	Weight (lbs./ft.)
T5090E075	3/4	19	1.22	31	240	27	7 1/2	0.41
T5090E100	1	25	1.46	37	240	27	9	0.50
T5090E125	1 1/4	32	1.73	44	240	27	10 1/4	0.60
T5090E150	1 1/2	38	1.97	50	240	27	13 1/4	0.68
T5090E200	2	51	2.48	63	240	27	16 1/4	0.91
T5090E250	2 1/2	63	3.03	77	240	27	17 1/2	1.40
T5090E300	3	76	3.62	92	240	24	20 3/4	1.91
T5090E400	4	102	4.65	118	240	24	26 1/2	2.61
T5090E600	6	152	6.77	172	240	24	40	5.28

COUPLING SUGGESTIONS

Quick-Acting and combination nipples, preferably stainless steel, attached with bands.

★ Kuriyama offers a full line of Quick-Acting couplings, pin lug shank couplings and combination nipples. Refer to current Kuriyama-Couplings™ and Accessories Catalog for type and pricing.

BECAUSE WE CONTINUALLY EXAMINE WAYS TO IMPROVE OUR PRODUCTS, WE RESERVE THE RIGHT TO ALTER SPECIFICATIONS OR DISCONTINUE PRODUCTS WITHOUT PRIOR NOTICE.

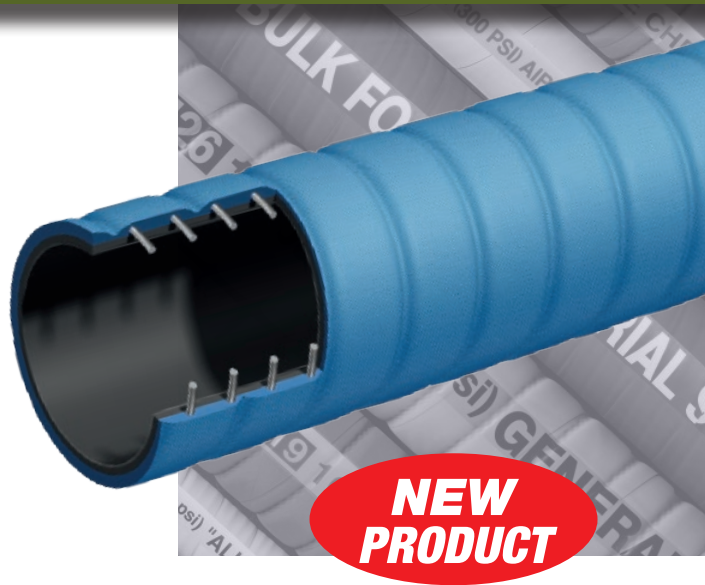
Chemical



T5190E

Acid – Chemical S & D
240 PSI – UHMWPE –
Corrugated
Suitable for use with DEF

CORRUGATED



Applications:

Suction and transfer service for a variety of chemicals and acids. Will handle 98% of EXISTING CHEMICALS. See Chemical Resistance Chart on pages 66 – 75.

Cover:

Blue EPDM – abrasion and ozone resistant.

Reinforcement:

Synthetic textile cords with flexible steel helix wire.

Tube:

Transparent UHMWPE (Ultra High Molecular Weight Polyethylene).

Temperature Range:

Normal recommended operating temperature is -22°F (-30°C) to 200°F (+93°C)

Branding:

ALFAGOMMA – ITALY T519 16 BAR (240 PSI) – UHMWPE CHEMICAL – S & D (in orange letters)

Standard Length:

100 feet

IT IS ADVISABLE TO TEST THE TUBE MATERIAL UNDER ACTUAL SERVICE CONDITIONS PRIOR TO USE.
NOTE: FOR MAXIMUM SERVICE LIFE, WE RECOMMEND THAT T509 HOSE BE FLUSHED OUT AFTER EVERY USE.

Nominal Specifications

Series	ID (in.)	ID (mm)	OD (in.)	OD (mm)	Max Rec. WP (PSI)	Vacuum HG (in.)	Min. Bending Radius (in.)	Weight (lbs./100 ft.)
T5190E200	2	51	2.48	63	240	27	6	94
T5190E300	3	76	3.54	90	240	27	9	169
T5190E400	4	102	4.57	116	240	27	12	275

COUPLING SUGGESTIONS

Quick-Acting and combination nipples, preferably stainless steel, attached with bands.

- ★ Kuriyama offers a full line of Quick-Acting couplings, pin lug shank couplings and combination nipples. Refer to current Kuriyama-Couplings™ and Accessories Catalog for type and pricing.

BECAUSE WE CONTINUALLY EXAMINE WAYS TO IMPROVE OUR PRODUCTS, WE RESERVE THE RIGHT TO ALTER SPECIFICATIONS OR DISCONTINUE PRODUCTS WITHOUT PRIOR NOTICE.