



The Pumps with Nine Lives



**Model: [3801K](#)  
38 FRAME BLOCK-STYLE PLUNGER PUMP**

**Specs**

Max Flow:	10 gpm
Min Pressure:	100 psi
Max Pressure:	5000 psi
Inlet Port Size:	1.5
Discharge Port Size:	1
RPM:	915
Drive Type(s):	Belt
Material:	Stainless Steel (SS)

**Description:**

This is a triplex (three plunger rods) positive displacement, reciprocating, plunger pump, constructed of a machined, 316SS block-style inlet and discharge manifolds, 316SS valve assemblies, solid ceramic plungers and standard NBR (Buna-N) seals and o-rings. These pumps are suitable for harsh liquids like saltwater and leachate, special sanitizing chemicals and food products. The K indicates the special flushed Inlet Manifold that permits an external flush liquid providing added cooling for hi-temp liquids and added lubrication for low-lubricity liquids such as DI water. Used with the 990663 Flushing Assembly, it offers containment of effluent emissions for environmental safety.

**Datasheet:** [3801-3811K Data Sheet](#)

**Service Manual:** [38 Frame Block-Style Plunger Service Manual](#)

**Accessories:**

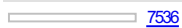
**Oil**



[6107](#)

Crankcase Oil

**Unloader**



[7536](#)

Multiple Gun Pressure Unloader

**Relief / Pop-Off Valve**



[7536.100](#)

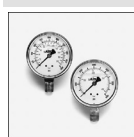
SS Pressure Relief Valve



[7037](#)

SS Pressure Relief Valve

**Pressure Gauge**



[6087](#)

Pressure Gauge

**Pulsation Dampener**



NO IMAGE AVAILABLE

[701520](#)

Pulsation Dampener - Rebuild NBR

**Captive Acceleration Tube**



[711500](#)

Captive Acceleration Tube

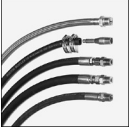
**Inlet Filter**



[7108.8](#)

Inlet Filter

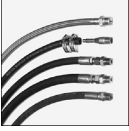
**Flexible Inlet Hose**



[990850](#)

Flexible Inlet Hose

### Flexible Discharge Hose



[990858](#)

Flexible Discharge Hose

### LPS Monitors



[30290](#)

LPS Monitor



[30290.120AC](#)

LPS Monitor