

DATA SHEET

STAINLESS STEEL POP-OFF VALVE



Standard Models: 1" 890710, 890711, 890712, 890714
2" 890703, 890713, 890715, 890721



Model 890710 Shown

FEATURES

- 316 Stainless Steel body.
- FPM seals and o-rings.
- Maximum temperature 300° F (149° C).

COMMON SPECIFICATIONS

	U.S.	Metric
Inlet Port	1" NPT(M)	1" NPT(M)
By-Pass Port	1" NPT(F)	1" NPT(F)
Weight	6.50 lbs	2.94 kg
Dimensions	8.93x3.18"	227x81 mm

COMMON SPECIFICATIONS

	U.S.	Metric
Inlet Port	2" NPT(M)	2" NPT(M)
By-Pass Port	2" NPT(F)	2" NPT(F)
Weight	20.50 lbs	9.28 kg
Dimensions	11.74x3.69"	298x94 mm

SPECIFICATIONS

	U.S. Measure	Metric Measure
890710		
Flow Range	0-100 gpm	0-378 lpm
System Pressure Range	300-1500 psi	21-103 bar
Maximum Relief Setting	1875 psi	129 bar
890711		
Flow Range	0-50 gpm	0-189 lpm
System Pressure Range	1000-6000 psi	69-414 bar
Maximum Relief Setting	7500 psi	517 bar
890712		
Flow Range	0-115 gpm	0-435 lpm
System Pressure Range	500-3000 psi	35-207 bar
Maximum Relief Setting	3750 psi	258 bar
890714		
Flow Range	0-100 gpm	0-378 lpm
System Pressure Range	300-1500 psi	21-103 bar
Maximum Relief Setting	1875 psi	129 bar

SPECIFICATIONS

	U.S. Measure	Metric Measure
890703		
Flow Range	0-135 gpm	0-511 lpm
System Pressure Range	400-1500 psi	28-103 bar
Maximum Relief Setting	1875 psi	129 bar
890713		
Flow Range	0-210 gpm	0-795 lpm
System Pressure Range	500-4000 psi	34-275 bar
Maximum Relief Setting	5000 psi	345 bar
890715		
Flow Range	0-100 gpm	0-378 lpm
System Pressure Range	1000-8000 psi	69-552 bar
Maximum Relief Setting	10,000 psi	689 bar
890721		
Flow Range	0-100 gpm	0-378 lpm
System Pressure Range	100-600 psi	7-41 bar
Maximum Relief Setting	750 psi	52 bar

SELECTION

Select a pop-off valve to meet or exceed the flow and pressure requirements of the system.

INSTALLATION

The pop-off valve should be mounted in the discharge line before any pressure regulator or unloader in the system to provide optimum protection. The inlet port and by-pass ports are marked with arrows indicating the direction of the flow. The by-pass flow from the pop-off valve should be returned to a reservoir or drain to the floor, not to the inlet of the pump.

OPERATION

This pop-off valve provides back-up protection to the primary relief valve for complete pressure relief and maximum pump and system protection.

PRESSURE ADJUSTMENT

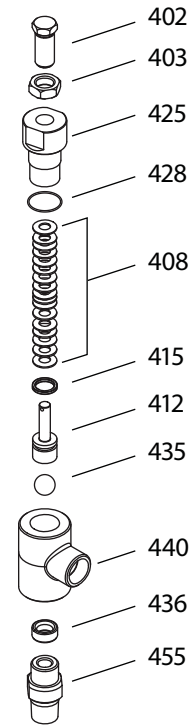
Before system is brought up to pressure ensure that the the primary pressure regulating device is set at its minimum setting. Adjust the pop-off valve to the high pressure setting by turning the adjustment nut. Bring your system up to the desired pressure using the primary pressure device

Note: If the pop-off valve relieves water in this process increase its setting.

With your system operating at full pressure with the primary pressure device, slowly back the pop-off adjustment screw until a small amount of water is dripping. Immediately adjust in 1/2 turn at a time until dripping stops; (no more than [3] 1/2 turns should be required). The pop-off valve is now set at approximately 10% over system pressure.

Note: the pop-off valve is a secondary safety device, it does not replace a pressure regulator or unloader.

EXPLODED VIEW



TROUBLESHOOTING

Valve cycles	• Valve is improperly set. Repeat adjustment procedure.
Valve continually by-passes	• Seat or retainer is worn. Replace as needed.

ITEM	DESCRIPTION	MATL	QTY	890703	890710	890711	890712	890713	890714	890715	890721
402	Screw, Adjusting	SS	1	890843	890825	890825	890825	890843	890825	890843	890843
403	Nut, Adjusting	SS	1	890871	890826	890826	890826	890871	890826	890871	890871
408	Washer, Spring	STZP	*	890836-19	890813-19	890813-20	890813-22	890836-18	890813-17	890836-18	890836-19
412	Piston	SS	1	890846	890815	890815	890815	890846	890815	890846	890846
415	Seal, Piston	FPM	1	-	-	-	-	-	-	-	-
425	Cylinder	SS	1	890842	890812	890812	890812	890842	890812	890842	890842
428	O-Ring, Cylinder	FPM	1	-	-	-	-	-	890691	-	-
435	Ball, Check	SS	1	-	-	-	-	-	-	-	-
436	Seat, Ball	SS	1	-	-	-	-	-	-	-	-
440	Body	SS	1	-	-	-	-	-	-	-	-
455	Fitting, Inlet [2" NPT(M)]	SS	1	890833	890819**	890819**	890819**	890833	890819**	890833	890833
468	Kit, Repair (Incls: 415,428,435,436)	FPM	1	890857	890857	890857	890857	890856	890856	890856	890856

* See individual quantity ** Fitting = 1" NPT(M)

It is recommended to replace spring washers as a set.

Material Codes (Not Part of Part Number): FPM = Fluorocarbon SS = 316SS STZP = Steel/Zinc Plated

CAUTIONS AND WARNINGS

All High Pressure Systems require a primary pressure regulating device (i.e. regulator, unloader) and a secondary pressure relief device (i.e. pop-off valve, relief valve). Failure to install such relief devices could result in personal injury or damage to pump or property. Cat Pumps does not assume any liability or responsibility for the operation of a customer's high pressure system.

Read all CAUTIONS and WARNINGS before commencing service or operation of any high pressure system. The CAUTIONS and WARNINGS are included in each service manual and with each Accessory Data sheet. CAUTIONS and WARNINGS can also be viewed online at www.catpumps.com/cautions-warnings or can be requested directly from Cat Pumps.

WARRANTY

View the Limited Warranty on-line at www.catpumps.com/warranty.



CAT PUMPS

1681 - 94TH LANE N.E. MINNEAPOLIS, MN 55449-4324
 PHONE (763) 780-5440 — FAX (763) 780-2958
 e-mail: techsupport@catpumps.com
www.catpumps.com