



**Griffco Valve Inc.**  
 188 Creekside Dr.  
 Amherst, NY 14228  
 PH: 716 835-0891  
 FAX: 716 835-0893

# G-SERIES PTFE FLANGED VALVE



**Griffco G-Series** diaphragm back pressure valves are designed to enhance the performance of chemical feed systems by applying a continuous back pressure to the chemical feed pump, while also acting as an anti-syphon valve. Robust construction ensures reliability in the rigorous service of sulphuric acid for both municipal and industrial applications. Wetted materials are: **PTFE**. Available sizes: 1/2" - 1".

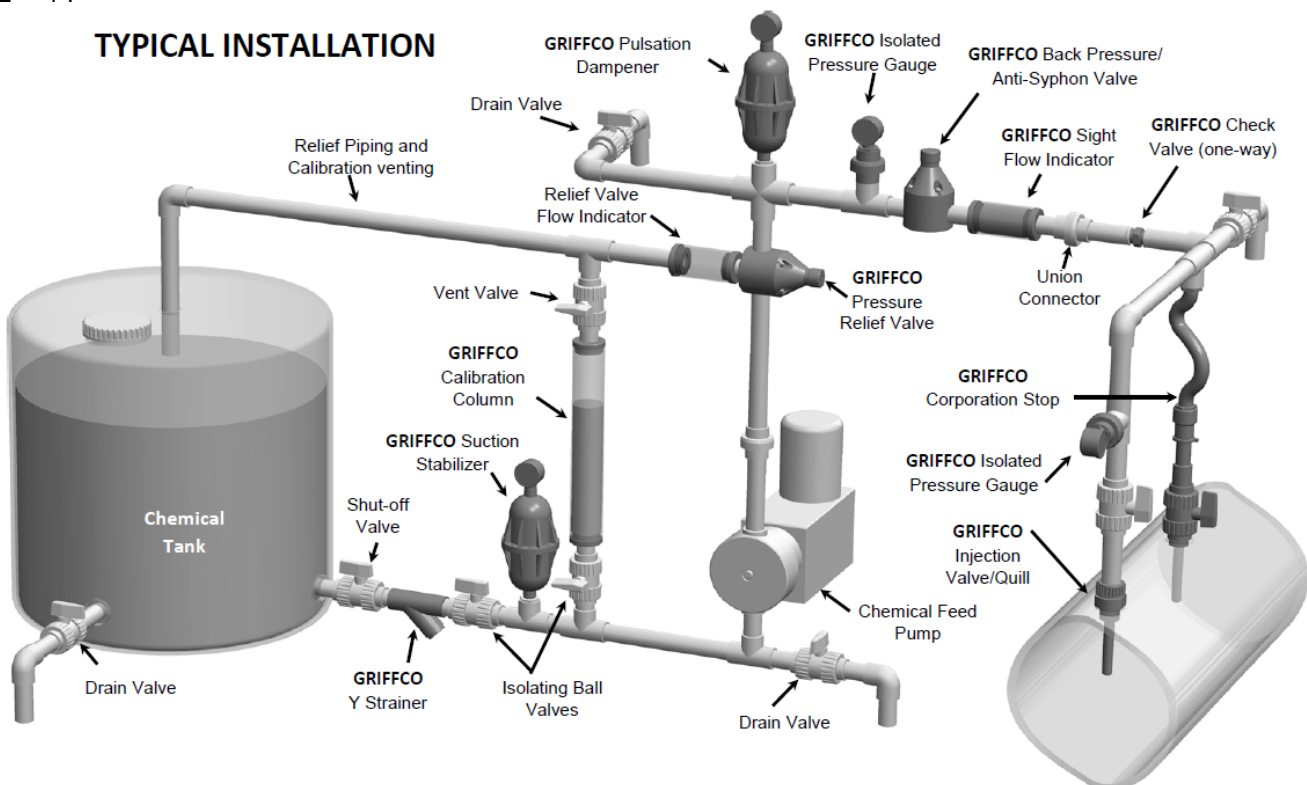
## Features:

- One Piece Machined Construction
- High Reliability / Low Cost
- Molded PTFE/EPDM Diaphragm
- Adjustable 10 - 150 PSI
- Optional PSI Rated Valves
- Anti-Syphon Function
- Bottom Support Disc
- Tamper Resistant Adjustment Screw
- Molded Noryl® Top

## Operation:

**Griffco** diaphragm back pressure valves apply positive discharge pressure to a metering pump system to prevent siphoning and eliminate varying dosage rates caused by fluctuating downstream pressure. The diaphragm is held against the valve seat by an internal spring. When the preset pressure is exceeded, the diaphragm is forced up and chemical flows through the valve to the injection point. The valves are preset for 50 psi, however they are field adjustable from 10 - 150 psi via the adjustment screw. Installation should be as close to the injection point as possible to prevent chemical line drainage, and it is most important that all chemical system equipment such as pulsation dampeners and pressure gauges are between the pump and back pressure valve.

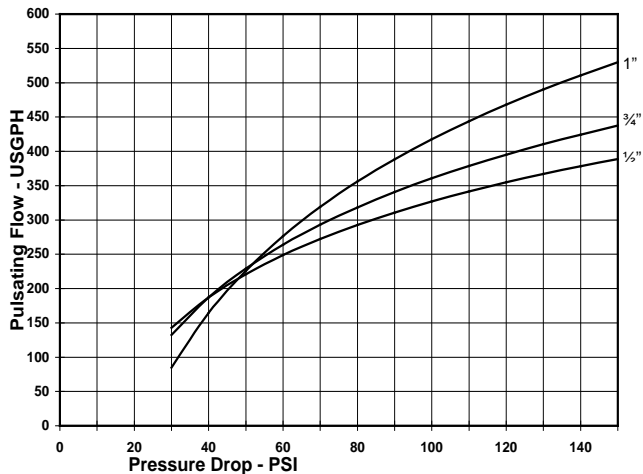
## TYPICAL INSTALLATION



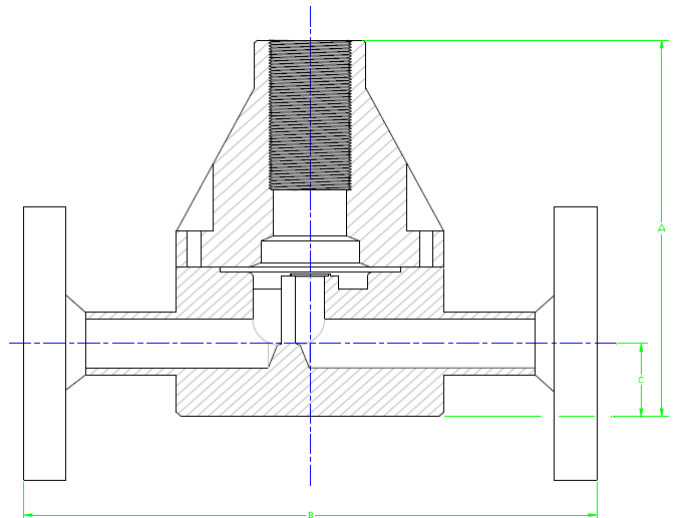
## Technical Data:

<b>Model BPG Sizes:</b>			1/2", 3/4", 1"		
<b>Connections:</b>			Flange		
<b>Pressure Adjustment</b>			Standard: 10 - 150 psi; Optional: 0 – 50 psi		
<b>Flow Rates @ 150 psi</b>			<b>Shipping Weight: lbs</b>		
<b>Size</b>	<b>Pulsating</b>	<b>Continuous</b>	<b>Plastic</b>	<b>Metal / Plastic Top</b>	<b>Metal / Metal Top</b>
1/2" 3/4" 1"	300 USgph 300 USgph 500 USgph	21 USgpm 21 USgpm 26 USgpm	3.0 3.0 3.5	N/A	N/A
<b>Max Temperature: (°F)</b>			300°, (Peak 390°)		
<b>Max Operating Pressure(psi) @ 70 Deg. F</b>			Plastic/Noryl®: 375 psi		
<b>Materials of Construction:</b>					
<b>Diaphragm</b>			PTFE / EPDM, Optional: Viton, Hypalon, & PTFE / Viton		
<b>Valve Top</b>			Noryl®, Optional: 316 SS		
<b>Valve Body</b>			PTFE		

## Performance Curves:



## Dimensions:



## Product Codes For Ordering Back Pressure Valves:

**BPG** □ □ □ □ □  
1 2 3 4

**1 = Size**   **2 = Material**   **3 = Spring Opt**   **4 = Options**  
 050 - 1/2"   T - PTFE   1 - 0 - 50 psi   V - Viton® Diaphragm  
 075 - 3/4"   F - Flange Connection  
 100 - 1"

## Dimensions: BPGTF Series

Size	A (in)	B (in)	C (in)
1/2"	5.56	7.50	1.125
3/4"	5.56	7.50	1.125
1"	5.86	7.50	1.250