



# MARCH PUMPS

1819 PICKWICK AVE., GLENVIEW, IL 60026-1306, U.S.A  
 PHONE: (847) 729-5300 - FAX: (847) 729-7062  
 WWW.MARCHPUMP.COM

## AC-4C-MD, BC-4C-MD, AC-4A-MD, BC-4A-MD, BC-4K-MD

**DESCRIPTION:** Series 4 are centrifugal magnetic drive pumps, eliminating the need for a shaft seal. Pumps can be serviced with a screwdriver. See the parts list for a breakdown of parts.

**OPERATION:**

Pumps are not self-priming, lack a suction lift, and thus require a **flooded suction**. Pumps **cannot be run dry** because the impeller requires the liquid being pumped for lubrication. For liquids with a specific gravity greater than water, have a higher viscosity, or for elevated temperatures, a trimmed impeller may be necessary. For application assistance, contact March Pump.

**ELECTRICAL:**

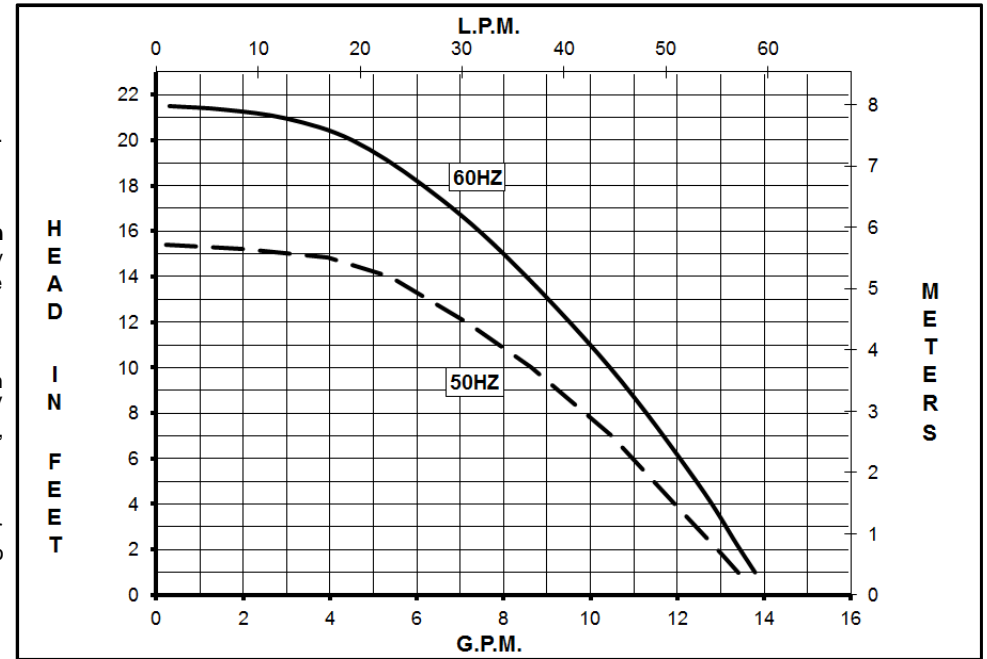
AC models have an Air Cooled Motor. BC models have a Blast Cooled Motor and they have an encapsulated impeller magnet. Motors are available in different electrical configurations such as 115 V 50/60 Hz, or 230 V 50/60 Hz, 1 phase. Motors have a 3 ft. (0.9 m) cord. All models have U.L. listed motors, which are rated for continuous duty.

**LIMITED WARRANTY:**

March pumps are guaranteed only against defects in workmanship or materials for a period of one year from date of manufacture pumping water. For the complete warranty and to register online go to [www.marchpump.com/warranty-registration](http://www.marchpump.com/warranty-registration)

**MODEL ABBREVIATIONS:**

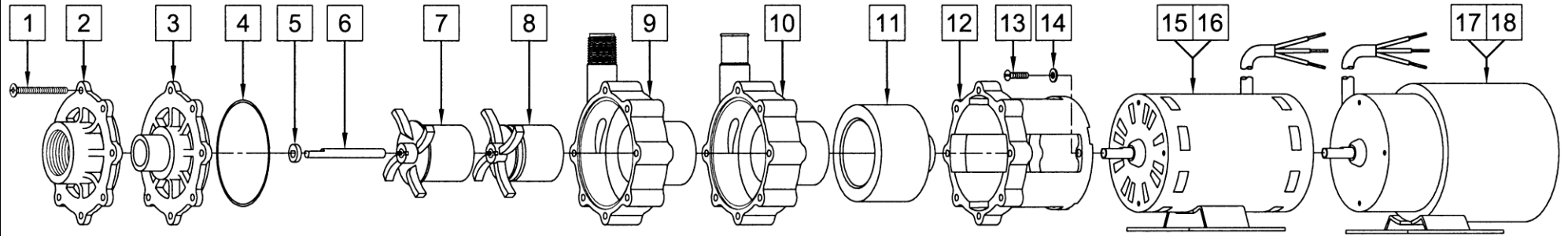
C/K: Threaded Inlet/Outlet, A: Smooth Inlet/Outlet, K: Kynar, C/A: Polypropylene



SPECIFICATIONS	AC-4C-MD		AC-4A-MD		BC-4C-MD		BC-4A-MD		BC-4K-MD																					
Product #	115 V	0145-0010-0100	0145-0052-0100	0145-0010-0400	0145-0048-0200	0145-0010-0800	230 V	0145-0010-0200	0145-0052-0200	0145-0010-0500	0145-0048-0100	0145-0010-0900																		
Inlet - Outlet	1" FPT - 1/2" MPT		1" OD - 3/4" OD		1" FPT - 1/2" MPT		1" OD - 3/4" OD		1" FPT - 1/2" MPT																					
Max Internal Pressure	50 psi (344 kPa)		50 psi (344 kPa)		50 psi (344 kPa)		50 psi (344 kPa)		75 psi (517 kPa)																					
Max Liquid Temperature	190 °F (87 °C)		190 °F (87 °C)		190 °F (87 °C)		190 °F (87 °C)		200 °F (93 °C)																					
MODEL	60 Hz										50 Hz										Height		Width		Length		Packed Weight			
	Max Flow	Max Flow	Max Head				ELECTRICAL				Max Flow	Max Flow	Max Head				ELECTRICAL				Inches	cm	Inches	cm	Inches	cm	lbs	kg		
	gpm	lpm	ft	psi	m	Ph	V	A	Hp	kW	Rpm	gpm	lpm	ft	psi	m	Ph	V	A	Hp	kW	Rpm								
AC-4C-MD	14	53	21.5	9.3	6.55	1	115	1.75	1/12	0.062	3450	13.2	50	15.4	6.7	4.7	1	115	1.75	1/12	0.062	2850	5.57	14.1	5.11	12.9	9.77	24.8	8.05	3.65
							230	0.75										230	0.75				5.57	14.1	5.07	12.8	10.09	25.6	7.50	3.40
AC-4A-MD	14	53	21.5	9.3	6.55	1	115	1.75	1/12	0.062	3450	13.2	50	15.4	6.7	4.7	1	115	1.75	1/12	0.062	2850	5.57	14.1	5.11	12.9	10.34	26.2	8.05	3.65
							230	0.75										230	0.75				5.57	14.1	5.07	12.8	10.65	27.0	7.50	3.40
BC-4C-MD	14	53	21.5	9.3	6.55	1	115	1.9	1/10	0.075	3450	13.2	50	15.4	6.7	4.7	1	115	1.9	1/10	0.075	2850	5.65	14.1	5.36	13.6	10.18	25.8	8.15	3.69
							230	0.75										230	0.75				5.65	14.1	5.36	13.6	10.18	25.8	8.15	3.69
BC-4A-MD	14	53	21.5	9.3	6.55	1	115	1.9	1/10	0.075	3450	13.2	50	15.4	6.7	4.7	1	115	1.9	1/10	0.075	2850	5.65	14.1	5.36	13.6	10.74	27.2	8.15	3.69
							230	0.75										230	0.75				5.65	14.1	5.36	13.6	10.74	27.2	8.15	3.69
BC-4K-MD	14	53	21.5	9.3	6.55	1	115	1.9	1/10	0.075	3450	13.2	50	15.4	6.7	4.7	1	115	1.9	1/10	0.075	2850	5.65	14.1	5.36	13.6	10.18	25.8	8.40	3.81
							230	0.75										230	0.75				5.65	14.1	5.36	13.6	10.18	25.8	8.40	3.81

All specifications & data are based on pumping water & are intended as a guideline only. Specifications may vary with different motors.

## PARTS LIST



**NOTE:** When attaching the Drive Magnet to the motor shaft, position the face of the Drive Magnet 1/16 inch below the face of the Motor Bracket.

#	DESCRIPTION	MATERIAL	SIZE (Inches)	QTY.	PART #				
					AC-4C-MD	AC-4A-MD	BC-4C-MD	BC-4A-MD	BC-4K-MD
1	Screw	Stainless Steel	#8-32 x 1-3/4 Lg.	7			0150-0021-1000		
2A	Cover	Polypropylene	1 FPT Inlet	1	0150-0032-1000		0150-0032-1000		
2B		Kynar		1					0150-0124-1000
3	Cover	Polypropylene	1 OD Inlet	1		0150-0150-1000		0150-0150-1000	
4A	"O" Ring	Buna-N	0.078 CS x 2.834 ID	1	0750-0987-1000				
4B	"O" Ring	Viton	0.078 CS x 2.834 ID	1			0750-0986-1000		
4C	"O" Ring (Option)	Viton/Teflon	0.070 CS x 3-1/8 OD	1			0150-0171-1000		
5	Thrust Washer	Ceramic		1			0130-0028-1000		
6	Shaft	Ceramic		1			0130-0024-1000		
7A	Encapsulated Impeller	Polypropylene		1			0145-0033-0200		
7B		Kynar	1					0145-0039-0200	
8	Impeller	Polypropylene/Ceramic Magnet		1	0145-0011-0100				
9A	Rear Housing w/Thrust Washer	Polypropylene/Ceramic	1/2 MPT Outlet	1	0150-0031-0100		0150-0031-0100		
9B		Kynar/Ceramic		1					0150-0123-0100
10	Rear Housing w/Thrust Washer	Polypropylene/Ceramic	3/4 OD Outlet	1		0150-0159-0100		0150-0159-0100	
11	Drive Magnet			1			0145-0027-0100		
12	Motor Bracket	Plastic		1			0145-0010-1000		
13	Screw	Stainless Steel	#8-32 x 5/8 Lg.	4			0618-0027-1000		
14	Washer Flat	Stainless Steel	#8	4			0858-0004-1000		
15	AC Motor, 115 V, 50/60 Hz			1	0145-0012-1000				
16	AC Motor, 230 V, 50/60 Hz			1	0145-0029-1000				
17	BC Motor, 115 V, 50/60 Hz			1			0145-0035-1000		
18	BC Motor, 230 V, 50/60 Hz			1			0145-0036-1000		
#	DESCRIPTION	ITEMS		QTY.	AC-4C-MD	AC-4A-MD	BC-4C-MD	BC-4A-MD	BC-4K-MD
W1	Wet End Kit (AC-4C-MD)	(1, 2A, 4A, 5, 6, 8, 9A)		1	0145-0045-0200				
W2	Wet End Kit (BC-4C-MD)	(1, 2A, 4B, 5, 6, 7A, 9A)		1			0145-0046-0200		

### Materials in Contact with Solution:

**AC-4C-MD & AC-4A-MD:** Polypropylene, Ceramic, Buna N, Ceramic Magnet

**BC-4C-MD & BC-4A-MD:** Polypropylene, Ceramic, Viton

**BC-4K-MD:** Kynar/Carbon Filled, Viton, Ceramic

NOTE: Contact Factory for other materials and/or parts not listed.

0145-0023-1000 R23