



MARCH PUMPS

1819 PICKWICK AVE., GLENVIEW, IL 60026-1306, U.S.A
 PHONE: (847) 729-5300 - FAX: (847) 729-7062
 WWW.MARCHPUMP.COM

815 HOT WATER PUMPS

DESCRIPTION & OPERATION: The March 815 Series hot water booster centrifugal magnetic drive pumps are built to handle liquid transfer in heating and cooling operations. Contact the factory for application assistance. Pumps are not self-priming, lack a suction lift, and thus require a flooded suction. Pumps cannot be run dry.

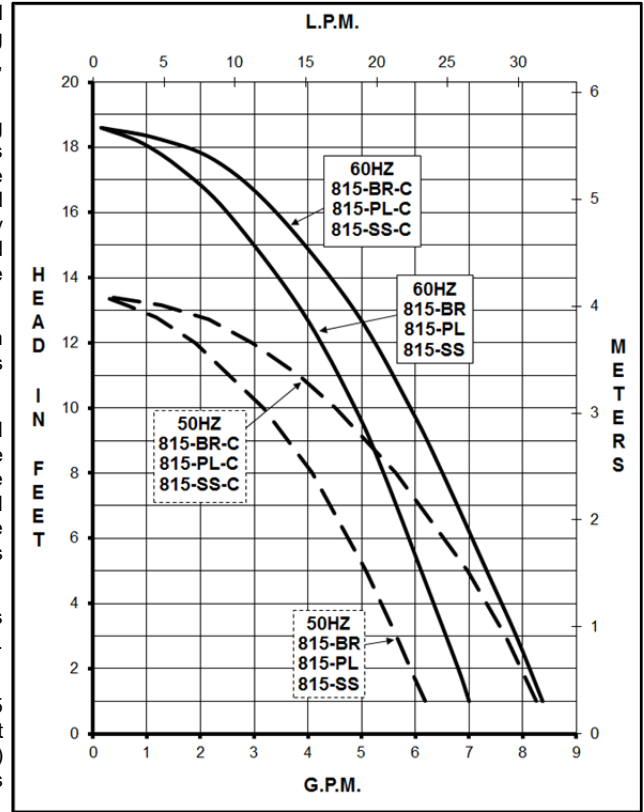
INSTALLATION: The 815 Series pumps should be installed with the pump housing arrow pointing in the direction of flow within the system. If the arrow indicating flow is not in the direction required, remove the housing screws holding the housing to the motor bracket and rotate the housing assembly as required. Replace the screws and tighten. The pump is composed of a wet end assembly which can be separated by unscrewing the housing screws. The pump will then separate into 2 parts. The liquid will be contained within the wet end assembly unless the rear housing screws on the rear housing are loosened.

LUBRICATION: The motor should be oiled annually at the start of the heating season with 4 or 5 drops of SAE 20 weight non-detergent oil in each bearing. If the pump is used year round it should be oiled every six months. Do not over oil.

GENERAL SAFETY INFORMATION: Follow all local electrical and safety codes, and the Occupational Safety and Health Act (OSHA). Make certain that the power source conforms to the requirements of your equipment. Always disconnect power source before performing any work on or near the electric motor. Caution must be exercised to relieve any pressure in the system and in draining hot water from the pump or the system. March cannot recommend the 815 Series out of bronze where the liquid is used for human consumption per California Law due to the presence of lead.

*UL Recognition on pumps, file E80954, is for water only. (815-BR, 815-PL) Motors are U.L. Yellow Card listed, impedance protected or thermal overload Protected. Complete pump under U.L. file E80954.

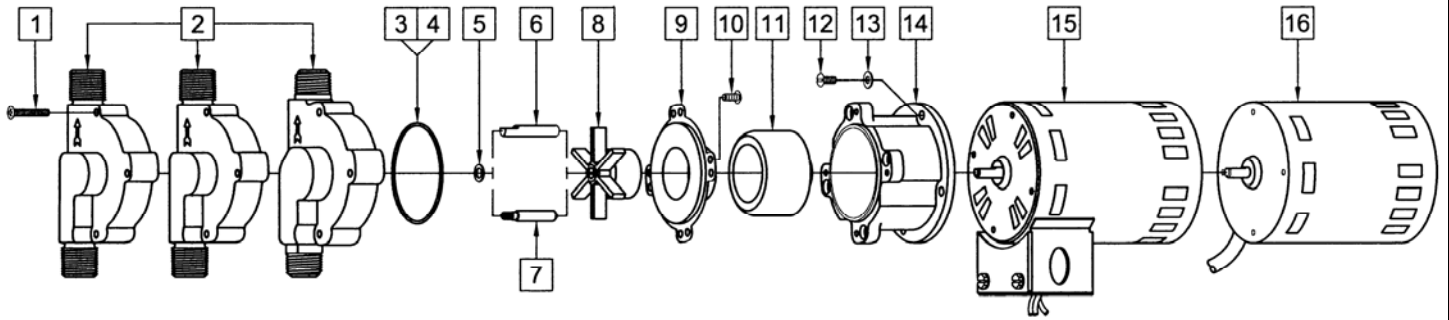
ELECTRICAL: Motors are available in different electrical configurations such as 115 Volt 50/60 Hz or 230 Volt 50/60 Hz, 1 Phase and rated for continuous duty. 115 Volt models 815-BR, 815-PL, & 815-SS have a conduit box, 230 Volt have a 3 foot (0.9 m) cord. Models 815-BR-C, 815-PL-C, & 815-SS-C have a 3 foot (0.9 m) cord. Motors are air cooled.



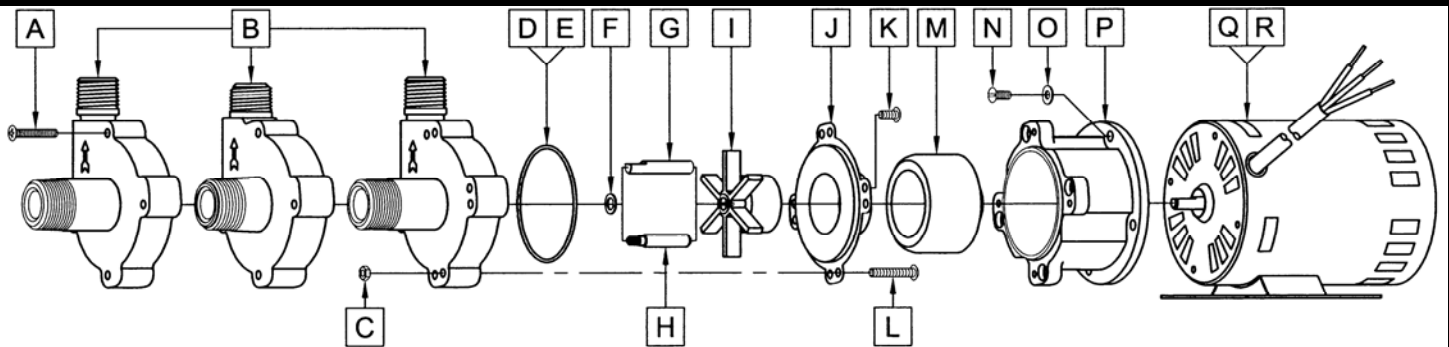
MODELS	815-BR		815-PL		815-SS		815-BR-C		815-PL-C		815-SS-C													
	115 V	230 V	0809-0058-0400	0809-0017-0200	0809-0215-0900	0809-0017-0400	0809-0188-0100	0809-0198-0100																
Product #	0809-0017-0100	0809-0017-0300	0809-0215-1100	0809-0017-0500	0809-0188-0200	0809-0198-0200																		
Abbreviations	BR: Bronze Inline Inlet		PL: Polysulfone Inline Inlet		SS: Stainless Inline Inlet		BR: Bronze C: Center Inlet		PL: Polysulfone C: Center Inlet		SS: Stainless C: Center Inlet													
UNITS	60 Hz	50 Hz	60 Hz	50 Hz	60 Hz	50 Hz	60 Hz	50 Hz	60 Hz	50 Hz	60 Hz	50 Hz												
Max Flow	7 gpm	22.7 lpm	7 gpm	22.7 lpm	7 gpm	22.7 lpm	8 gpm	30 lpm	8 gpm	30 lpm	8 gpm	30 lpm												
Max Head	18.6 ft / 8.05 psi	4.1 m	18.6 ft / 8.05 psi	4.1 m	18.6 ft / 8.05 psi	4.1 m	18.6 ft / 8.05 psi	4.1 m	18.6 ft / 8.05 psi	4.1 m	18.6 ft / 8.05 psi	4.1 m												
Inlet	1/2" MPT		1/2" MPT		1/2" MPT		3/4" MPT		3/8" FPT & 3/4" MPT		3/4" MPT													
Outlet	1/2" MPT		1/2" MPT		1/2" MPT		1/2" MPT		1/2" MPT		1/2" MPT													
Internal Pressure	150 psi / 10 bar Max		50 psi / 3.4 bar Max		150 psi / 10 bar Max		150 psi / 10 bar Max		50 psi / 3.4 bar Max		150 psi / 10 bar Max													
Liquid Temperature	250 °F / 121 °C Max		250 °F / 121 °C Max		250 °F / 121 °C Max		250 °F / 121 °C Max		250 °F / 121 °C Max		250 °F / 121 °C Max													
Packed Weight	6 lbs / 2.7 kg		5 lbs / 2.3 kg		6 lbs / 2.7 kg		6 lbs / 2.7 kg		5 lbs / 2.3 kg		6 lbs / 2.7 kg													
ELECTRICAL 60 Hz	W	A	Hp	Rpm	W	A	Hp	Rpm	W	A	Hp	Rpm	W	A	Hp	Rpm	W	A	Hp	Rpm	W	A	Hp	Rpm
115 V	111	1.4	1/25	3450	111	1.4	1/25	3450	111	1.4	1/25	3450	112	1.4	1/25	3450	112	1.4	1/25	3450	112	1.4	1/25	3450
230 V	112	0.7	1/25	3450	112	0.7	1/25	3450	112	0.7	1/25	3450	126	0.7	1/25	3450	126	0.7	1/25	3450	126	0.7	1/25	3450
ELECTRICAL 50 Hz	W	A	kW	Rpm	W	A	kW	Rpm	W	A	kW	Rpm	W	A	kW	Rpm	W	A	kW	Rpm	W	A	kW	Rpm
115 V	114	1.4	0.029	2850	114	1.4	0.029	2850	114	1.4	0.029	2850	129	1.4	0.029	2850	129	1.4	0.029	2850	129	1.4	0.029	2850
230 V	117	0.7	0.029	2850	117	0.7	0.029	2850	117	0.7	0.029	2850	128	0.7	0.029	2850	128	0.7	0.029	2850	128	0.7	0.029	2850
Overall Pump Size	H	W	L	H	W	L	H	W	L	H	W	L	H	W	L	H	W	L	H	W	L	H	W	L
115 V	Inches	5.31	3.33	7.74	5.31	3.38	7.74	5.31	3.33	7.74	4.50	3.50	8.94	4.37	3.50	8.43	4.50	3.50	8.62					
	cm	13.4	8.4	19.6	13.4	8.5	19.6	13.4	8.4	19.6	11.4	8.8	22.7	11.0	8.8	21.4	11.4	8.8	21.8					
230	Inches	4.87	3.33	7.74	4.88	3.38	7.74	4.87	3.33	7.74	4.50	3.50	8.94	4.37	3.50	8.43	4.50	3.50	8.62					
	cm	12.3	8.4	19.6	12.3	8.5	19.6	12.3	8.4	19.6	11.4	8.8	22.7	11.0	8.8	21.4	11.4	8.8	21.8					

All specifications & data are based on pumping water & are intended as a guideline only. Specifications may vary with different motors.

PARTS LIST



#	DESCRIPTION	815-BR	815-PL	815-SS	SIZE (Inches)	QTY.	815-BR	815-PL	815-SS
1	Screw (Housing)	Steel	Steel	Stainless	#8-32 x 1 Lg.	4	0923-0003-1000		0809-0205-1000
2	Pump Housing	Bronze	Polysulfone	Stainless	Inline Inlet & Outlet	1	0809-0013-0000	0809-0079-0100	0809-0211-0010
3	"O" Ring		Silicone		0.070 CS x 2.441 ID	1	0809-0165-1000		0809-0165-1000
4	"O" Ring		Silicone		1/16 CS x 2-3/8 ID	1		0809-0027-1000	
5	Thrust Washer		Teflon			1		0809-0043-1000	
6	*Shaft		Stainless		"D" Flat	1		0809-0161-1000	
7	*Shaft		Stainless		Left-Hand Thread	1	0809-0214-1000		0809-0214-1000
8	Impeller		Ryton/Teflon/Glass		2-5/32 Dia.	1		0809-0107-0200	
9	Rear Housing		Stainless			1		0809-0012-1000	
10	Screw (Rear Housing)		Stainless		#8-32 x 3/8 Lg.	4		0135-0040-1000	
11	Drive Magnet					1		0125-0083-0100	
12	Screw		Stainless		#8-32 x 3/8 Lg.	4		0135-0040-1000	
13	Washer		Stainless		#8	4		0858-0004-1000	
14	Motor Bracket		Plastic			1		0809-0058-1000	
15	Motor 115 V, 50/60 Hz				Conduit Box	1		0809-0090-1000	
16	Motor 230 V, 50/60 Hz				w/Cord, No Base	1		0135-0037-1000	



#	DESCRIPTION	815-BR-C	815-PL-C	815-SS-C	SIZE (Inches)	QTY.	815-BR-C	815-PL-C	815-SS-C
A	Screw (Housing)	Steel	Steel	Stainless	#8-32 x 1 Lg.	4	0923-0003-1000		0809-0205-1000
B	Pump Housing	Bronze	Polysulfone	Stainless	Center Inlet	1	0809-0142-0000	0809-0179-0100	0809-0150-0010
C	Hex Nut		Stainless			4			0991-0004-1000
D	"O" Ring		Silicone		0.070 CS x 2.441 ID	1	0809-0165-1000		0809-0165-1000
E	"O" Ring		Silicone		1/16 CS x 2-3/8 ID	1		0809-0027-1000	
F	Thrust Washer		Teflon			1		0809-0043-1000	
G	*Shaft		Stainless		"D" Flat	1		0809-0161-1000	
H	*Shaft		Stainless		Left-Hand Thread	1	0809-0214-1000		0809-0214-1000
I	Impeller		Ryton/Teflon/Glass		2-5/32 Dia.	1		0809-0107-0200	
J	Rear Housing		Stainless			1		0809-0012-1000	
K	Screw (Rear Housing)		Stainless		#8-32 x 3/8 Lg.	4	0135-0040-1000		
L	Screw		Stainless		#8-32 x 1 Lg.	4			0809-0205-1000
M	Drive Magnet					1		0125-0083-0100	
N	Screw		Stainless		#8-32 x 3/8 Lg.	4		0135-0040-1000	
O	Washer		Stainless		#8	4		0858-0004-1000	
P	Motor Bracket		Plastic			1		0809-0058-1000	
Q	Motor 115 V, 50/60 Hz				w/Cord & Base	1		0809-0123-1000	
R	Motor 230 V, 50/60 Hz				w/Cord & Base	1		0809-0124-1000	

DISASSEMBLY & REASSEMBLY

The motor can be removed from the wet end assembly without draining the liquid from the system. To do so remove four housing screws and slide the motor assembly away. If parts inside the wet end assembly must be removed, isolate the pump or drain the system. When the system is drained and cool, remove the four rear housing screws from the rear of the housing. The rear housing can now be removed. Remaining pump parts can be removed. Replace any worn or damaged parts. Replace the "O" ring anytime the rear housing is removed.

NOTE: Contact Factory for other materials and/or parts not listed.

0809-0053-1200 R6

*Check shaft type before ordering replacement parts.

LIMITED WARRANTY: March pumps are guaranteed only against defects in workmanship or materials for a period of one year from date of manufacture pumping water. For the complete warranty and to register online go to www.marchpump.com/warranty-registration