



MARCH PUMPS

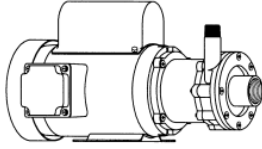
1819 PICKWICK AVE., GLENVIEW, IL 60026-1306, U.S.A
 PHONE: (847) 729-5300 - FAX: (847) 729-7062
 WWW.MARCHPUMP.COM

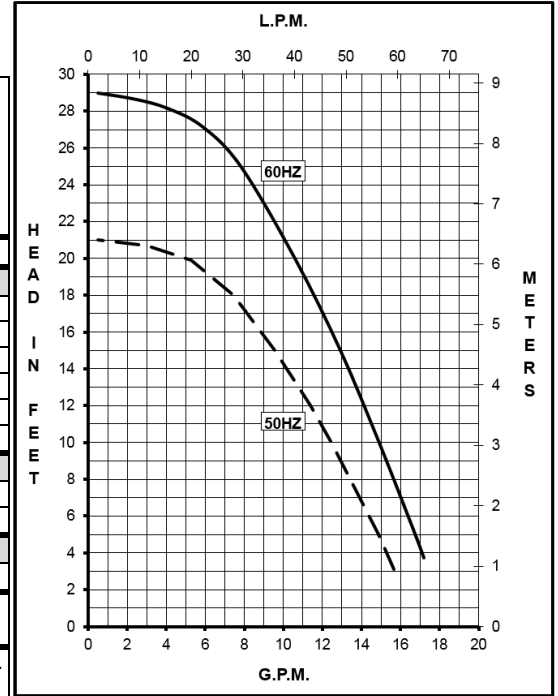
TE-5S-MD

DESCRIPTION: Series 5 are centrifugal magnetic drive pumps, eliminating the need for a shaft seal. All are serviceable with a screwdriver.

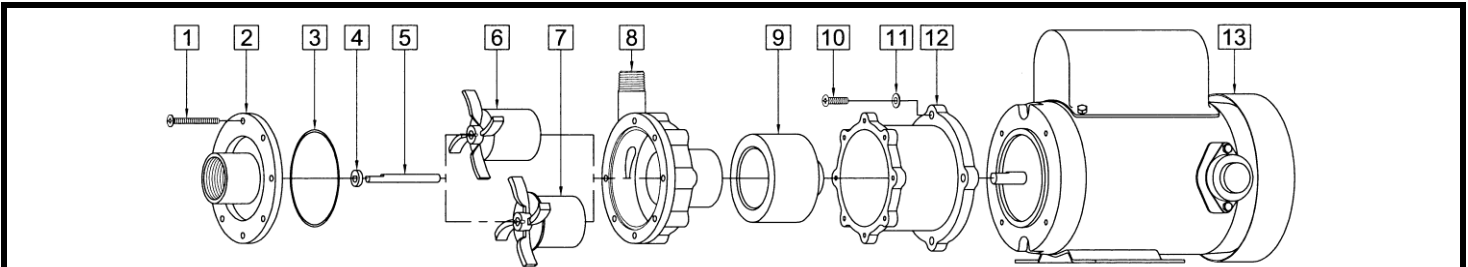
OPERATION: Pumps are not self-priming, lack a suction lift, and thus require a **flooded suction**. Pumps **cannot be run dry** because the impeller requires the liquid being pumped for lubrication. For liquids with a specific gravity greater than water, have a higher viscosity, or for elevated temperatures, a trimmed impeller may be necessary. For application assistance, contact March Pump.

ELECTRICAL: Models are dual voltage 115 Volt / 230 Volt and have a conduit box. Models have U.L. listed motors and are rated for continuous duty.

MODEL										
Product #	0150-0120-0100									
UNITS	60 Hz					50 Hz				
Max Flow	18 gpm / 68.1 lpm					15.98 gpm / 60.5 lpm				
Max Head	29 ft / 12.5 psi / 8.8 m					20.8 ft / 9 psi / 6.3 m				
Inlet - Outlet	1" FPT - 1/2" MPT					1" FPT - 1/2" MPT				
Max Internal Pressure	200 psi (1378 kPa)					200 psi (1378 kPa)				
Max Liquid Temperature	250 °F (121 °C)					250 °F (121 °C)				
Packed Weight	25.75 lbs / 11.68 kg					25.75 lbs / 11.68 kg				
ELECTRICAL	V	A	Hp	kW	Rpm	V	A	Hp	kW	Rpm
	115	2.10	0.2	0.149	3450	110	2.2	0.2	0.149	2850
	230	1.05	0.2	0.149	3450	220	1.1	0.2	0.149	2850
OVERALL SIZE	Height			Width			Length			
	7.19" (18.2 cm)			8.02" (20.3 cm)			13.31" (33.8 cm)			
Materials in Contact w/Solution:	316 Stainless Steel, Viton, Ceramic, Carbon									



All specifications/values are based on pumping water and are intended as a guideline only. Values may vary with different motors.



When attaching the Drive Magnet to motor shaft, position the face of the Drive Magnet 3/32 inch below the face of the Motor Bracket.

#	DESCRIPTION	MATERIAL	SIZE (Inches)	QTY.	PART #
1	Screw	Stainless	#8-32 x 1-3/4 Lg.	7	0150-0021-1000
2	Cover	316 Stainless	1 FPT Inlet	1	0150-0111-0010
3	"O" Ring	Viton	0.078 CS x 2.834 ID	1	0750-0986-1000
	"O" Ring (Option)	Viton/Teflon	0.070 CS x 3-1/8 OD	1	0150-0171-1000
	"O" Ring (Option)	Buna N	0.078 CS x 2.834 ID	1	0750-0987-1000
4	Thrust Washer	Ceramic		1	0130-0028-1000
5	Shaft	Ceramic		1	0130-0024-1000
6	Impeller w/Carbon Bushing	316 Stainless		1	0150-0114-0400
	Impeller w/Mica Teflon Bushing (Option)	316 Stainless		1	0150-0114-0600
	Impeller (Option)	Polypropylene		1	0150-0098-0200
	Impeller w/Carbon Bushing (Option)	Polypropylene		1	0150-0098-0300
	Impeller w/ Mica Teflon Bushing (Option)	Polypropylene		1	0150-0098-0500
	Impeller (Option)	Kynar		1	0150-0125-0200
	Impeller w/Carbon Bushing (Option)	Kynar		1	0150-0125-0300
7	Impeller w/Carbon Bushing (Option)	Kynar		1	0150-0125-0500
	Impeller w/Mica Teflon Bushing (Option)	Kynar		1	0150-0125-0500
8	Rear Housing	316 Stainless	1/2 MPT Outlet	1	0150-0110-0010
9	Drive Magnet			1	0150-0176-0300
10	Screw	Stainless	#10-32 x 3/4 Lg.	4	0150-0050-1000
11	Washer	Stainless	#10	4	0150-0051-1000
12	Motor Bracket	Plastic		1	0150-0070-0100
13	Motor, TEFC, 115/230 V, 50/60 Hz			1	0150-0090-1000

LIMITED WARRANTY: March pumps are guaranteed only against defects in workmanship or materials for a period of one year from date of manufacture pumping water. For the complete warranty and to register online go to www.marchpump.com/warranty-registration

Explosion proof & special voltage motors are available for upon special order.

NOTE: Contact Factory for other materials and/or parts not listed.

0150-0060-1300 R1