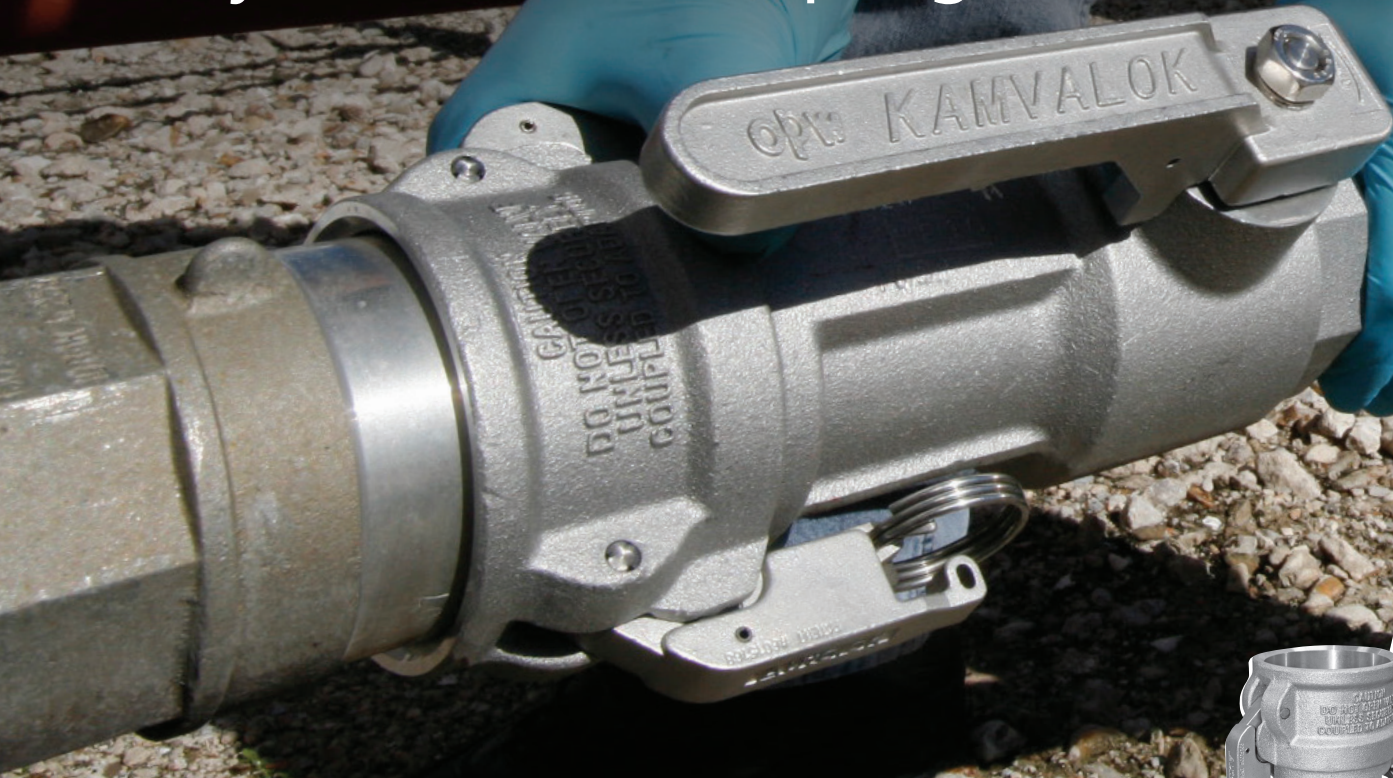


KAMVALOK®

Dry Disconnect Couplings



The Reliable Solution To Prevent Spillage

OPW Kamvalok® Dry Disconnect Couplings are considered the standard of the industry. Used at liquid-transfer points where product loss could occur, OPW Kamvaloks provide a reliable solution to prevent spillage during connection or disconnection.



Kamvalok®
Dry Disconnect Coupler

Features & Benefits:

- **SST LOCKING HANDLE** Locks in position to prevent accidental opening or closing of valve.
- **AUTOLOK™ LOCKING ARMS** Provide added protection with an automatic locking mechanism signaled by a positive click. Release requires only an easy tug on the lock release.
- **PROVIDES FOR TOTAL CLOSED-LOOP LOADING CAPABILITIES** Keeps hazardous liquids and vapors inline and out of the environment. Provides automatic closure from both directions – the coupler and the adaptor – to prevent accidental spills.
- **SPILL PROTECTION** Helps reduce the hazards involved in the connection/disconnection process of transferring hazardous materials.
- **SAFE & EASY MAINTENANCE** Unique stuffing-box design makes disassembly/maintenance quick and easy.
- **1-1/2", 2" AND 3" SIZES**
- **ALUMINUM OR STAINLESS-STEEL CONSTRUCTION**
- **OPERATING PRESSURES UP TO 210 PSI (15 BAR)**
- **CAN BE COUPLED IN ANY ORIENTATION** – 360°
- **AUTOMATICALLY SHUTS OFF FLOW** if accidental disconnect occurs



opw-es.com

ENGINEERING | WHAT'S NEXT

Design Parameters

Max Design Pressure	1-1/2" Size - 210 psig (15 bar) 2" Size - 150 psig (10.5 bar) 3" Size - 120 psig (8.5 bar)
Temperature Range	<ul style="list-style-type: none"> • Buna-N -20° F – 250° F (-29° C – 121° C) • Fluorocarbon -20° F – 400° F (-29° C – 204° C) • PTFE -15° F – 400° F (-26° C – 204° C) • EPDM -50° F – 250° F (-46° C – 121° C) • FFKM -15° F – 400° F (-26° C – 204° C)

Materials

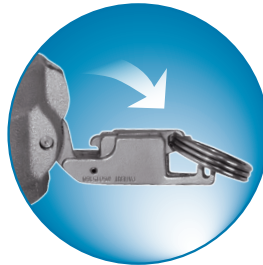
Body, Poppet, Seal Cylinder	Aluminum, Stainless Steel
Shaft Link, Cam Arms, Poppet Link	Stainless Steel

Easy-to-Operate Locking Arms

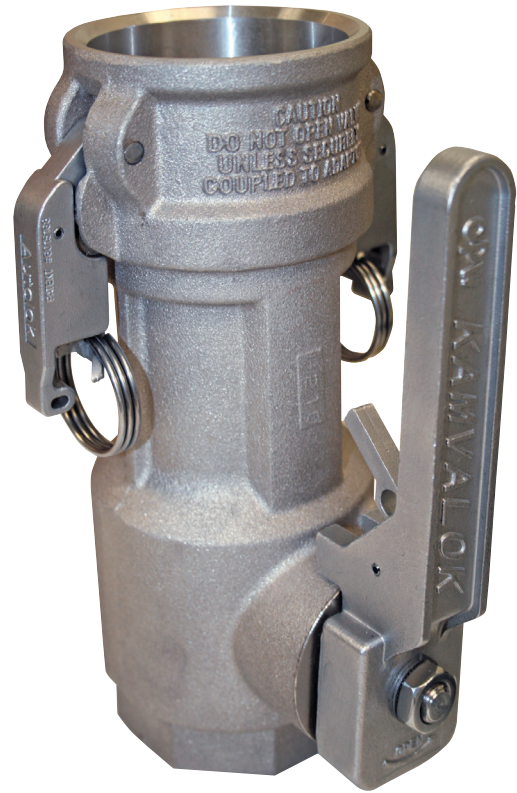
The patented Autolok™ locking mechanism, built into the coupling arms, means you simply snap the locking arms shut with one smooth motion and the coupler stays secure and shut until you unlock it. No clips, pins or buttons.



Autolok™ arm locked



Autolok™ arm unlocked



1700DL Kamvalok®
Dry Disconnect Coupling

Selection Guide

Type
16 - Adaptor
17 - Coupler

Configuration
1 - Aluminum Body, Duplex Stainless-Steel Internals
7 - Stainless-Steel Body, Duplex Stainless-Steel Internals

Size
15 - 1-1/2" DN40
20 - 2" DN50
30 - 3" DN80

1711DL - AL15 - GL

O-Ring Seal

- 1 - Buna-N
- 2 - Fluorocarbon
- 3 - PTFE
- 4 - EPDM
- 6 - FFKM
- 7 - PTFE/FKM

Coupler

- DL - FNPT - Female NPT
- DBL - FBSPT - Female BSPT

Adaptor

- ANF - 150 lb. Flange
- ANFT - 300 lb. Flange
- AN - Female NPT
- ANF - Female BPT

Construction Material

- AL - Aluminum Body (ASTM A356-T6 B-26)
- SS - Stainless-Steel Body (ASTM A351 CF3M 316L)

Style

- * - Leave blank for FNPT
- A - 150-lb. Flange (Coupler Only)
- GL - Greaseless
- KL - Keylok
- T - 300-lb. Flange (Coupler Only)

NOTE: Caps and plugs are available. Always order the next size up for all plugs/caps. Example: a 1 1/2" Kamvalok requires a 2" cap/plug.